



ASX:PNR
Canaccord Conference 2025

Important Notes



Nature of Document. This presentation has been prepared and issued by Pantoro Limited (Pantoro or Company) to provide general information about Pantoro.

Summary Information. The information in this document is in summary form and should not be relied upon as a complete and accurate representation of any matters that a reader should consider in evaluating Pantoro. While management has taken every effort to ensure the accuracy of the material in this presentation, Pantoro and its advisers have not verified the accuracy or completeness of the material contained in this presentation.

Not an offer. This presentation and its contents are not an invitation, offer, solicitation or recommendation with respect to the purchase or sale of any securities in Pantoro in any jurisdiction and must not be distributed, transmitted, or viewed by any person in any jurisdiction where the distribution, transmission or viewing of this document would be unlawful under the securities or other laws of that or any other jurisdiction. This presentation is not a prospectus or any other offering document under Australian law (and will not be lodged with the Australian Securities and Investments Commission) or any other law.

Not financial product advice. Neither Pantoro nor any of its related bodies corporate is licensed to provide financial product advice in respect of Pantoro's securities or any other financial products. You should not act and refrain from acting in reliance on this presentation. Nothing contained in this presentation constitutes investment, legal, tax or other advice. This presentation does not take into account the individual investment objectives, financial situation and particular needs of Pantoro shareholders. Before making a decision to invest in Pantoro at any time, you should conduct, with the assistance of your broker or other financial or professional adviser, your own investigation in light of your particular investment needs, objectives and financial circumstances and perform your own analysis of Pantoro before making any investment decision.

Disclaimer. No representation or warranty, express or implied, is made by Pantoro that the material contained in this presentation will be achieved or proved correct. Except for statutory liability which cannot be excluded, each of Pantoro, its directors, officers, employees, advisors and agents expressly disclaims any responsibility for the accuracy, fairness, sufficiency or completeness of the material contained in this presentation and excludes all liability whatsoever (including in negligence) for any loss or damage which may be suffered by any person as a consequence of any information in this presentation or any effort or omission therefrom. Pantoro will not update or keep current the information contained in this presentation or to correct any inaccuracy or omission which may become apparent, or to furnish any person with any further information. Any opinions expressed in the presentation are subject to change without notice.

required by law or regulation (including the ASX Listing Rules), Pantoro and their respective directors, officers, employees, advisers, agents and other intermediaries disclaim any obligation or undertaking to provide any additional or updated information, whether as a result of new information, future events or results or otherwise (including to reflect any change in expectations or assumptions).

Nothing in this presentation will, under any circumstances (including by reason of this presentation remaining available and not being superseded or replaced by any other presentation or publication with respect to Pantoro or the subject matter of this presentation), create an implication that there has been no change in the affairs of Pantoro since the date of this presentation.

Forward Looking Statements and future performance This presentation contains forward looking statements about Pantoro. Often, but not always, forward looking statements can be identified by the use of forward looking words such as "may", "will", "expect", "intend", "plan", "estimate", "anticipate", "continue", and "guidance", or other similar words and may include, without limitation, statements in this presentation regarding intent, belief, expectations, plans, strategies and objectives of management, indications of and guidance on synergies, future earnings or financial position or performance, future acquisitions, anticipated production or construction commencement dates, costs or production outputs for Pantoro (based on, among other things, respective estimates of production for the periods specifically referred to in this presentation), and the future operation of Pantoro. Pantoro does not make any representation or warranty as to the currency, accuracy, reliability or completeness of any forward looking statements contained in this presentation.

To the extent that this presentation contains forward looking information, the forward looking information is subject to a number of risks, including those generally associated with the gold industry and the mining industry more broadly. Any such forward looking statement inherently involves known and unknown risks, uncertainties and other factors that may cause actual results, performance and achievements to be materially greater or less than estimated. These may include, but are not limited to, changes in commodity prices, foreign exchange fluctuations and general economic conditions, increased costs and demand for production inputs, the speculative nature of exploration and project development (including the risks of obtaining necessary licenses and permits and diminishing quantities or grades of reserves), political and social risks, changes to the regulatory framework within which Pantoro operates or may in the future operate, environmental conditions including extreme weather conditions, geological and geotechnical events, and other environmental issues, the recruitment and retention of key personnel, industrial relations issues, litigation and outbreaks of disease or pandemics (including the continuation or escalation of the global COVID-19 pandemic. Any such forward looking statements are based on assumptions, qualifications and contingencies which are subject to change and which may ultimately prove to be materially incorrect, as are statements about market and industry trends, which are based on interpretations of current market conditions. Investors should consider any forward looking statements contained in this presentation in light of such matters (and their inherent uncertainty) and not place reliance on such statements. Forward looking statements are not guarantees or predictions of future performance and may involve significant elements of subjective judgment, assumptions as to future events that may not be correct, known and unknown risks, uncertainties and other factors, many of which are outside the control of Pantoro. Any forward looking statements are based on information available to Pantoro as at the date of this presentation. Except as

Important Notes (Continued)



Past performance. Past performance metrics and figures (including past share price performance of Pantoro), as well as pro forma financial information, included in this presentation are given for illustrative purposes only and should not be relied upon as (and is not) an indication of Pantoro's, or any other party's views on Pantoro's future financial performance or condition or prospects. Investors should also note that the pro forma historical financial information is for illustrative purpose only. Investors should note that past performance of Pantoro, including in relation to the historical trading price of Pantoro shares, production, mineral resources and ore reserves, costs and other historical financial information cannot be relied upon as an indicator of (and provides no guidance, assurance or guarantee as to) future Pantoro performance, including the future trading price of Pantoro shares. The historical information included in this presentation is, or is based on, information that has previously been released to the market.

Exploration Targets, Exploration Results. The information in this report that relates to Exploration Targets and Exploration Results is based on information compiled by Mr Scott Huffadine (B.Sc. (Hons)), a Competent Person who is a Member of the Australian Institute of Geoscientists. Mr Huffadine is a Director and full time employee of the Company. Mr Huffadine is eligible to participate in short and long term incentive plans of and holds shares, options and performance rights in the Company as has been previously disclosed. Mr Huffadine has sufficient experience that is relevant to the style of mineralisation and type of deposit under consideration and to the activity being undertaken to qualify as a Competent Person as defined in the 2012 Edition of the 'Australasian Code for Reporting of Exploration Results, Mineral Resources and Ore Reserves'. Mr Huffadine consents to the inclusion in the report of the matters based on his information in the form and context in which it appears.

ASX Listing Rule 5.23 Mineral Resources & Ore Reserves. This presentation contains estimates of Pantoro's ore reserves and mineral resources, as well as estimates of the Norseman Gold Project's ore reserves and mineral resources. The information in this presentation that relates to the ore reserves and mineral resources of Pantoro has been extracted from a report entitled 'Annual Mineral Resource & Ore Reserve Statement' announced on 26 September 2024 and is available to view on the Company's website (www.pantoro.com.au) and www.asx.com (Pantoro Announcement).

For the purposes of ASX Listing Rule 5.23, Pantoro confirms that it is not aware of any new information or data that materially affects the information included in the Pantoro Announcement and, in relation to the estimates of Pantoro's ore reserves and mineral resources, that all material assumptions and technical parameters underpinning the estimates in the Pantoro Announcement continue to apply and have not materially changed. Pantoro confirms that the form and context in which the Competent Person's findings are presented have not been materially modified from that announcement.

ASX Listing Rule 5.19 Production Targets. The information in this announcement that relates to production targets of Pantoro has been extracted from reports entitled 'DFS for the Norseman Gold Project' announced on 12 October 2020, 'Annual Mineral Resource & Ore Reserve Statement' announced on 26 September 2022, 'Annual Mineral Resource & Ore Reserve Statement' announced on 29 September 2023 and 'Underground Development to Commence at Scotia' announced on 17 January 2024 and are available to view on the Company's website (www.pantoro.com.au) and www.asx.com (Pantoro Production Announcements).

For the purposes of ASX Listing Rule 5.19, Pantoro confirms that all material assumptions underpinning the production target, or the forecast financial information derived from the production target, in the Pantoro Production Announcements continue to apply and have not materially changed.

JORC Code. It is a requirement of the ASX Listing Rules that the reporting of ore reserves and mineral resources in Australia comply with the Joint Ore Reserves Committee's Australasian Code for Reporting of Mineral Resources and Ore Reserves ("JORC Code"). Investors outside Australia should note that while ore reserve and mineral resource estimates of the Company in this document comply with the JORC Code (such JORC Code-compliant ore reserves and mineral resources being "Ore Reserves" and "Mineral Resources" respectively), they may not comply with the relevant guidelines in other countries and, in particular, do not comply with (i) National Instrument 43-101 (Standards of Disclosure for Mineral Projects) of the Canadian Securities Administrators (the "Canadian NI 43-101 Standards"); or (ii) Item 1300 of Regulation S-K, which governs disclosures of mineral reserves in registration statements filed with the SEC. Information contained in this document describing mineral deposits may not be comparable to similar information made public by companies subject to the reporting and disclosure requirements of Canadian or US securities laws.



Norseman PRIMED for Growth

Resource & Reserves

Large, High-Grade Mineral Resource

44.9 Mt @
3.3 g/t for
4.7 million
ounces gold



Growing Gold Production Position

New, fully operational gold mining operation

New processing plant operating **above nameplate capacity** at 1.2 million tpa and readily expandable.

High grade OK Underground Mine **outperforming** the Mineral Resource and Ore Reserve.

Scotia Underground Mine **in production** and continuing to **ramp up**.

Open pits **operational** at Princess Royal.

Rehabilitating the Bullen Mine in the Mainfield.

Positioned For Growth

In One Of WA's Highest Grade Goldfields

Large Pipeline of Ore Sources

Growth strategy aims to add **high grade mill feed** to expand to +200Kozpa in medium term.

Programme **underway** and **ramping up** in FY26.



Notes:

1. Refer to page 3 for cautionary statements regarding production targets.
2. Refer to the Company's ASX announcement dated 6 January 2025 titled "Production and guidance update" and Quarterly Activities Report released on 28 April 2025.
3. Refer to page 24 for full details of Mineral Resource & Ore Reserve.

Corporate Structure

Share Price ¹	A\$3.21 (US\$2.06)
Ordinary Shares	389 million
Options and rights	12.1 million
Cash and gold ^{1,2}	A\$132 million (US\$84.83)
Market Capitalisation ¹	A\$1.3 billion (US\$0.83)
Debt ⁵	Nil
Hedging/options	Zero premium collars 16,000 Put @ A\$3,500/Oz 8,000 Call at A\$4,200/Oz

MAJOR SHAREHOLDERS³

Regal FM	14.5%
Tulla Resources	13.1%
Bank of Nova Scotia	7.29%
Sprott	6.14%
Franklin Advisors	5.2%

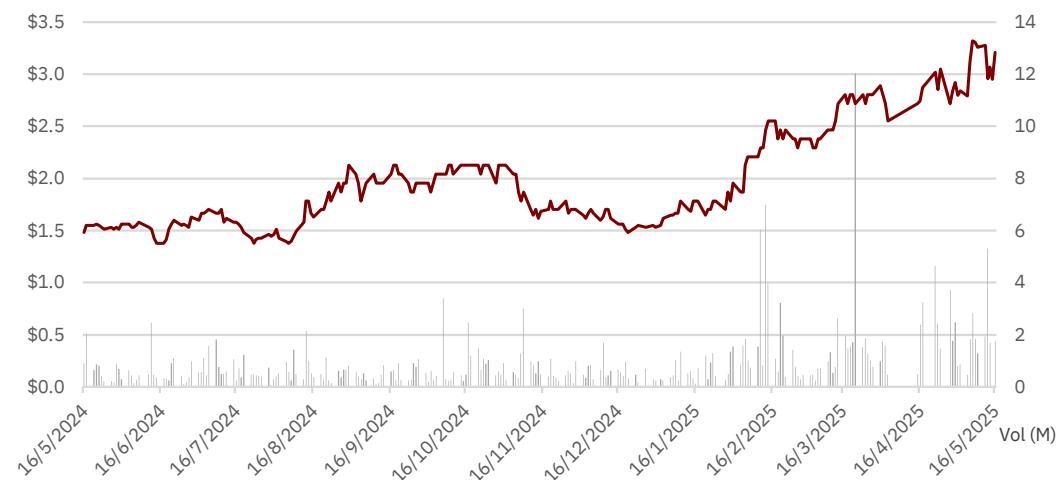
1. Share price and market capitalisation as at 16 May 2025. AUD:USD Exchange as at 16 May 2025.

2. Cash and gold as at 31 March 2025.

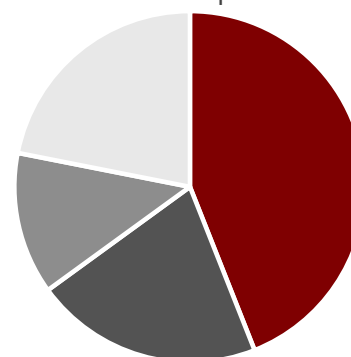
3. Major shareholders as at 16 May 2025 as notified to the Company.

4. Investor composition and domicile as at 31 March 2025.

5. \$9.8 million debt repaid subsequent to 31 March 2025 on 12 May 2025.

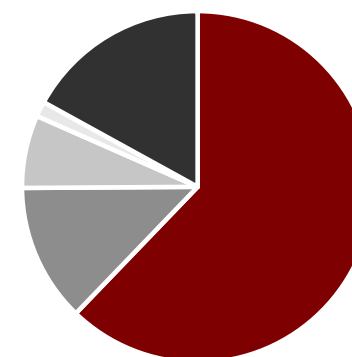


Investor Composition⁴



■ Institutional ■ Corp. ■ Retail ■ Other

Investor Domicile



■ Australia ■ N. America ■ UK ■ Asia ■ ROW

Strong, Experienced Team



BOARD

Wayne Zekulich Chair	<ul style="list-style-type: none"> Financial management, banking and accounting background Extensive public company experience at CFO and director level 	Paul Cmrlec Managing Director	<ul style="list-style-type: none"> Mining Engineering background with >25 years experience Extensive experience in feasibility, project development, operations and corporate management
Fiona Van Maanen Independent Non-executive Director	<ul style="list-style-type: none"> CPA and holds a Bachelor of Business (Accounting) >30 years experience in corporate governance, financial management, and accounting in the mining industry 	Stuart Mathews Independent Non-executive Director	<ul style="list-style-type: none"> Previously the Executive Vice President – Australasia and VP Operations for Gold Fields Limited. Instrumental in setting the strategy pathway, operational improvement, and significant growth of Life of Mine for the St. Ives operation, approximately 100 km north of Norseman.
Kevin Maloney Non-executive Director	<ul style="list-style-type: none"> Chairman and founder of Tulla Resources Group and Chairman of THEMAC Resources. Extensive experience in corporate banking, finance and the resources industry 	Mark Maloney Non-executive Director	<ul style="list-style-type: none"> Managing Partner of Tulla Resources, previously CEO of The MAC Services. >15 years experience in investment markets. Bachelor of Business (Hons).

SENIOR MANAGEMENT

Scott Huffadine Chief Operating Officer	<ul style="list-style-type: none"> Geologist with strong operational and project development background and >30 years experience. Extensive site general management and corporate experience. 	Scott Balloch Chief Financial Officer	<ul style="list-style-type: none"> Highly experienced CFO and financial controller with > 25 years experience with ASX listed mining companies.
David Okeby Company Secretary	<ul style="list-style-type: none"> More than 20 years working in mining companies and experienced in all areas of company legal and secretarial matters. 		

100% ownership of a gold province

WORLD-CLASS GREENSTONE BELT

Pantoro Gold's tenure is situated in the southern end of the most gold-endowed Greenstone Belt of the Yilgarn Craton. **The Norseman-Wiluna Greenstone Belt has seen >195Moz² Au produced to date.**

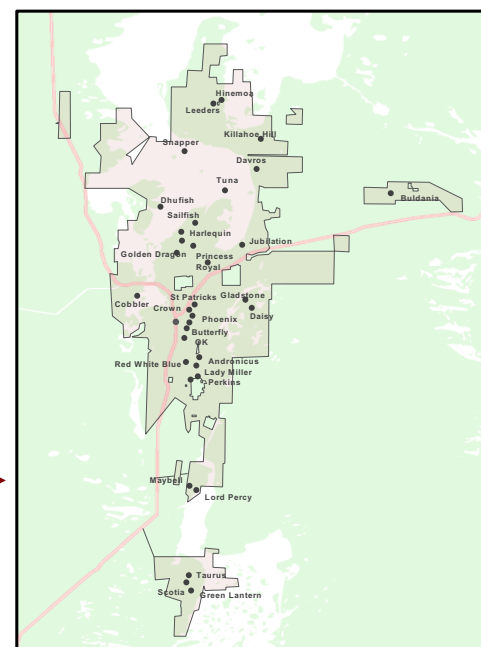
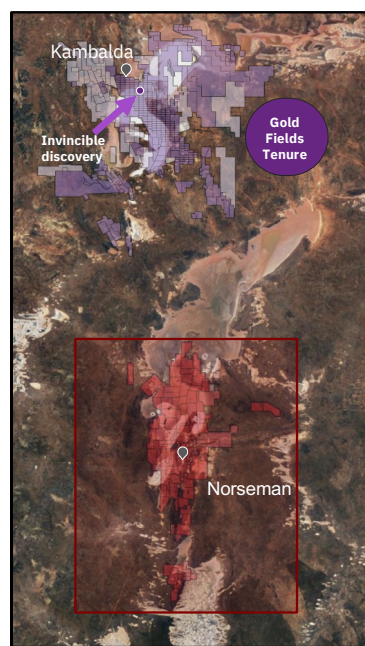
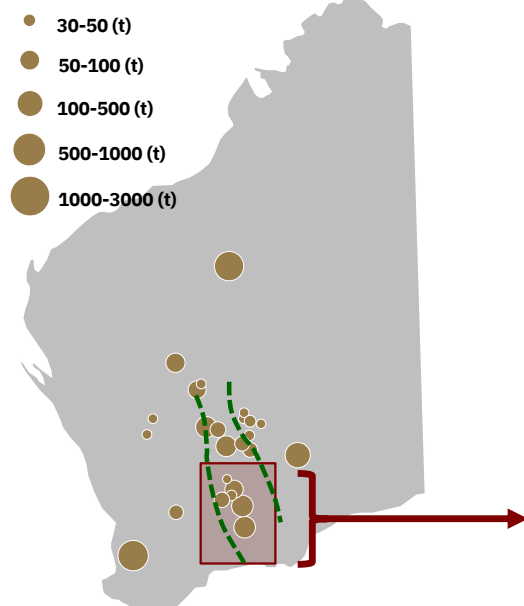
HIGHLY PROSPECTIVE

The area between Norseman and Kambalda is highly prospective, with **6Moz** Au produced from Norseman tenure to date. **Much of the region is covered by lakes with minimal exploration**

SIGNIFICANT EXPLORATION UPSIDE

Pantoro Gold's Norseman tenure is a significant proportion of the **highly prospective region**, including Lake Cowan which has had **minimal modern exploration**

MAJOR WA GOLD DEPOSITS¹



1. Adapted from Rush Australia's 21st Century Gold Industry (2016)
2. WA Department of Mines, Industry Regulation and Safety 2019 Major Commodities Resources Data. Cumulative Gold Production from the following mineral fields: Broad Arrow, Coolgardie, Dundas, East Coolgardie, East Murchison, Mt Margaret, North Coolgardie, North East Coolgardie.

Norseman Gold Project Overview



800 km²
tenure
position

70 km along
strike of one
of **Australia's**
most
significant
goldfields.

Historical
production of
approximately
**6 million
ounces.**

Current Operations

1.2MTPA processing plant.

Two active underground mines.

Rehabilitating Bullen decline to enable re-entry to the high-grade Mainfield.

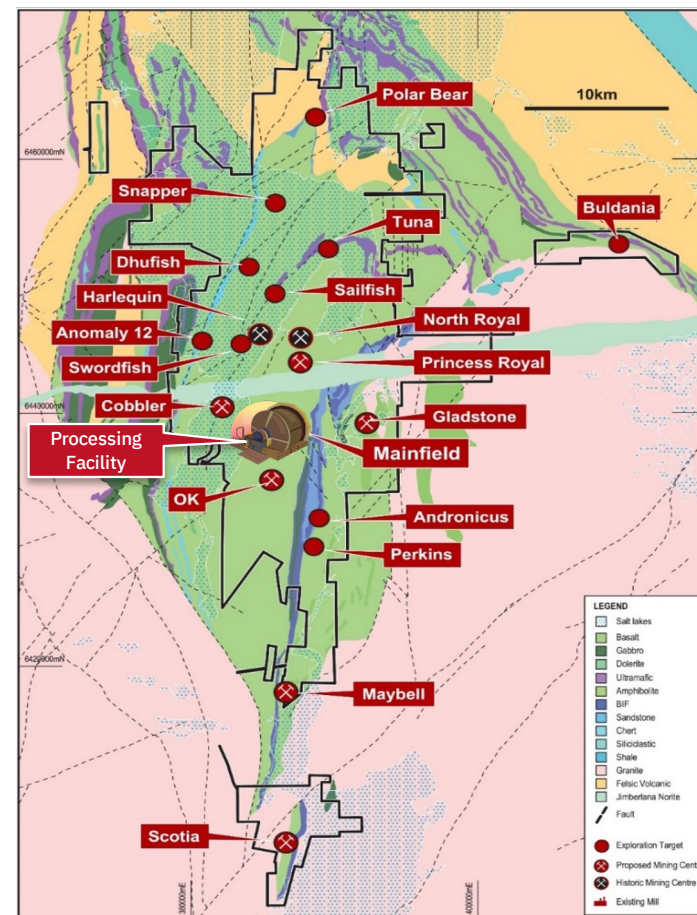
Open pits recommenced at Princess Royal in March 2025.

First systematic exploration in three decades

Exploration drilling from surface and underground re-commenced in September 2024 – **already yielding strong results.**

Less than 30% of known Mineral Resource areas drilled for Ore Reserve conversion to date.

New regional exploration program in greenfield areas in FY2026.



March 2025 Quarter

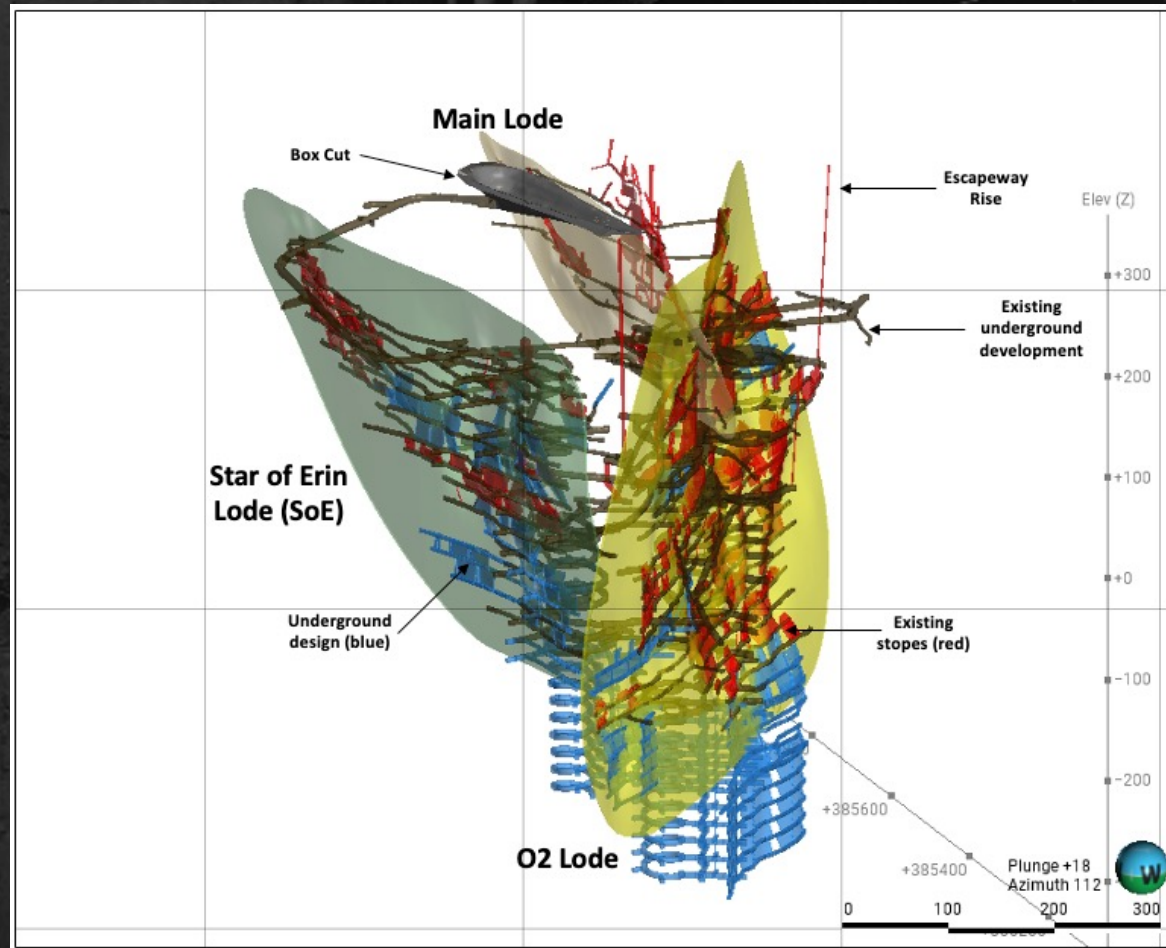


	FY 2025		
Physical Summary	Q1	Q2	Q3
UG Ore Mined	51,833	101,309	113,061
UG Grade Mined	5.97	4.54	3.91
OP BCM Mined	600,611	52,830	162,407
OP Ore Mined	342,226	44,660	1,613
OP Grade Mined	1.31	0.37	1.57
Ore Processed	292,718	300,400	305,876
Head Grade	2.40	2.12	1.98
Recovery	94.3%	94.8%	94.2%
Gold Produced	21,374	19,438	18,334
Cost Summary	(\$/Oz)	(\$/Oz)	(\$/Oz)
Production costs	\$2,095	\$1,569	\$1,834
Stockpile Adjustments	\$50	\$368	-\$23
C1 Cash Cost	\$2,144	\$1,937	\$1,811
Royalties	\$87	\$128	\$152
Marketing/Cost of sales	\$2	\$2	\$2
Sustaining Capital	\$143	\$266	\$437
Corporate Costs	\$19	\$23	\$25
All-in Sustaining Costs	\$2,395	\$2,356	\$2,427
Major Project Capital	\$14.27M	\$19.18M	\$13.68M
Exploration Cost	\$2.54M	\$4.90M	\$10.41M
Project Capital	\$16.80M	\$24.08M	\$24.09M

Quarterly production numbers in AUD.

- AISC of \$2,427 resulting in **EBITDA of A\$46.4 million (US\$29.8)** and cash and gold **increase of A\$13.4 million (US\$8.6)**.
- Significant increase in exploration expenditure to A\$10.4 million (US\$6.7), in line with growth program planning.
- Further growth expected from Scotia this quarter **>40,000 tonnes mined in April 2025**.
- Extensive grade control drilling at Scotia continued during the quarter with **strong results driving additional ore in the mine plan**.
- Modest production expected from open pits in Q4 as waste strip is completed. Full production from September 2025 quarter.
- Solid cost control resulted in total expenditure within budget. Unit costs impacted by lower production.

OK Underground Mine



Ore Reserve increases after mine depletion **every year** since commencement in 2022.

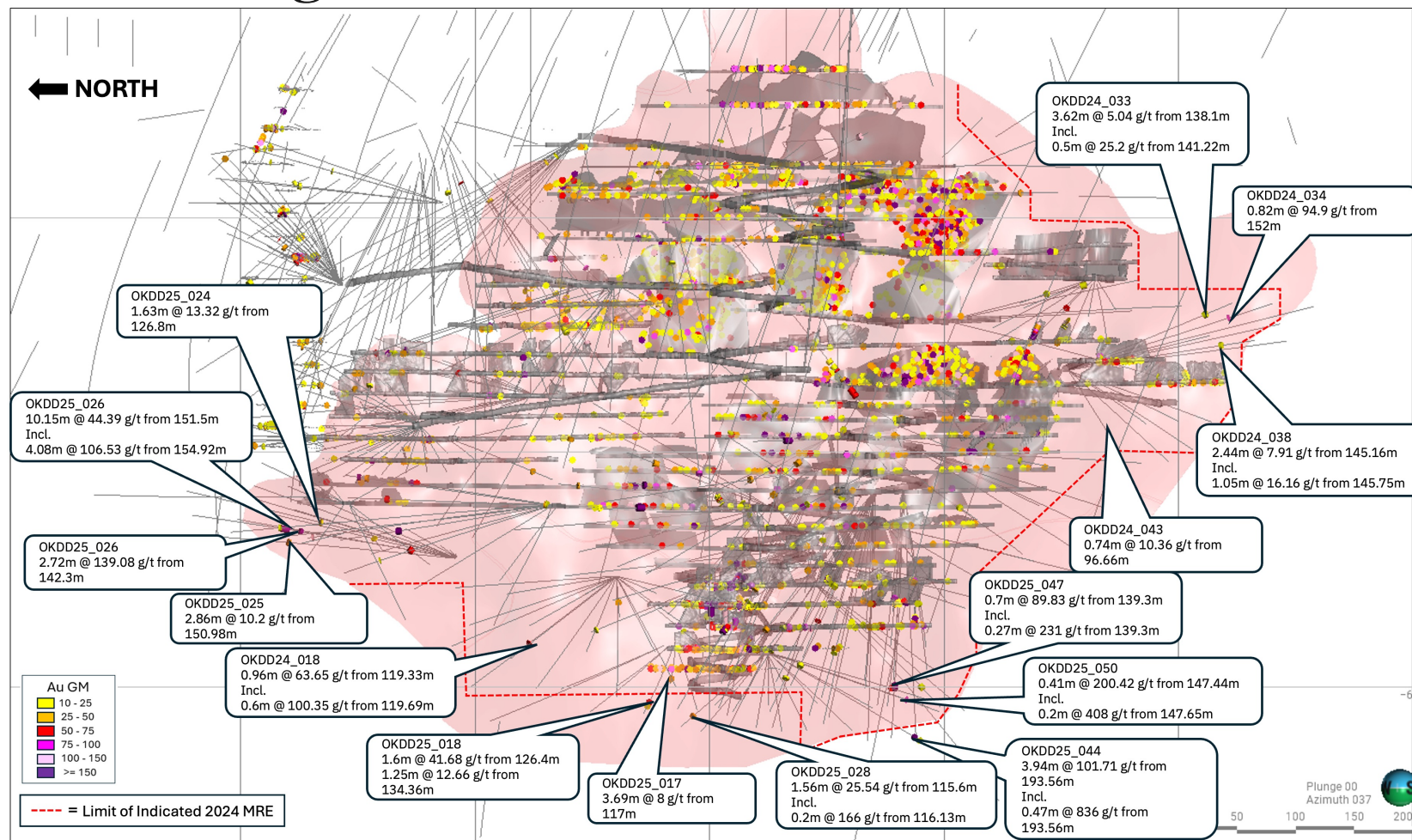
Producing in steady state at **circa 40,000 Oz per annum**.

FY year to date **mined grade ~5.9g/t**

Now undertaking **extensional drilling** for the first time since commencement.

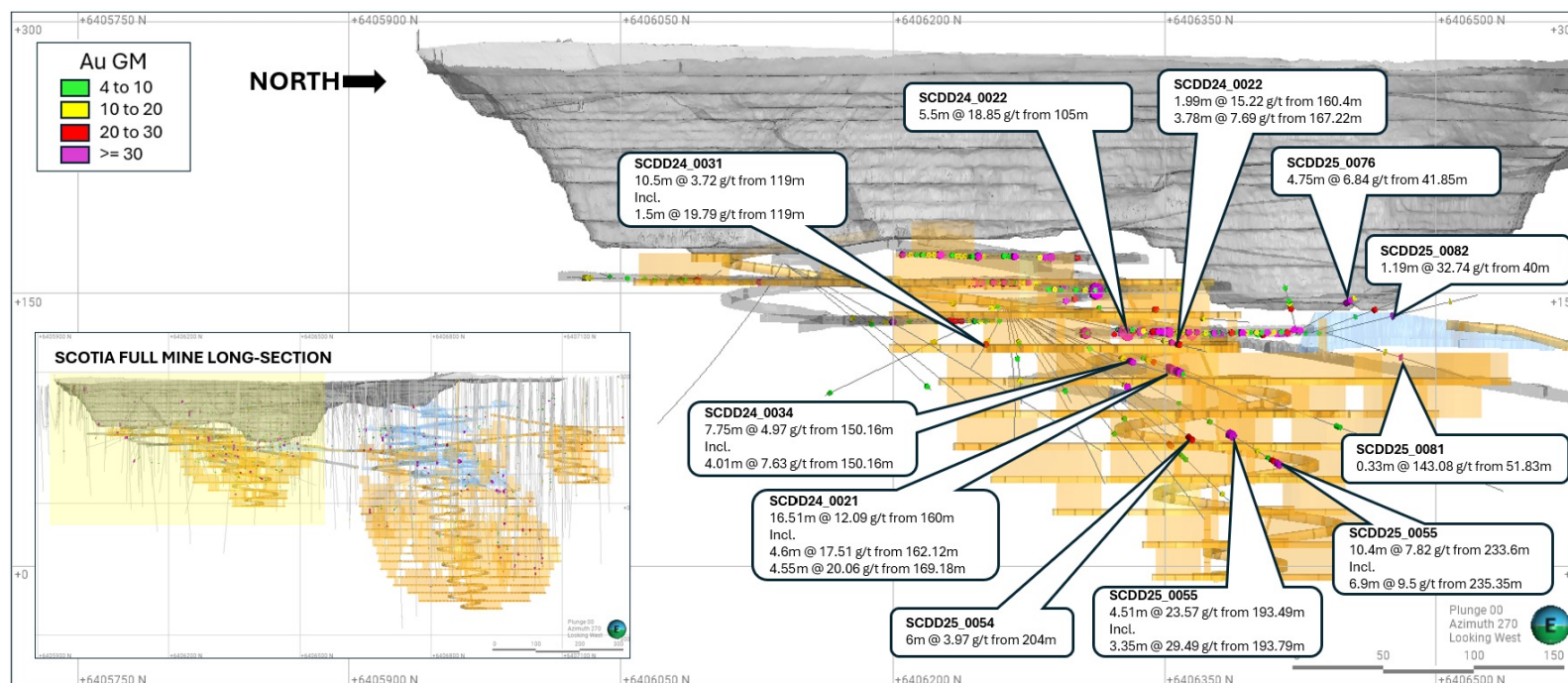
Drilling extensions in both the Star of Erin and O2 lodes for the foreseeable future.

OK Underground Mine



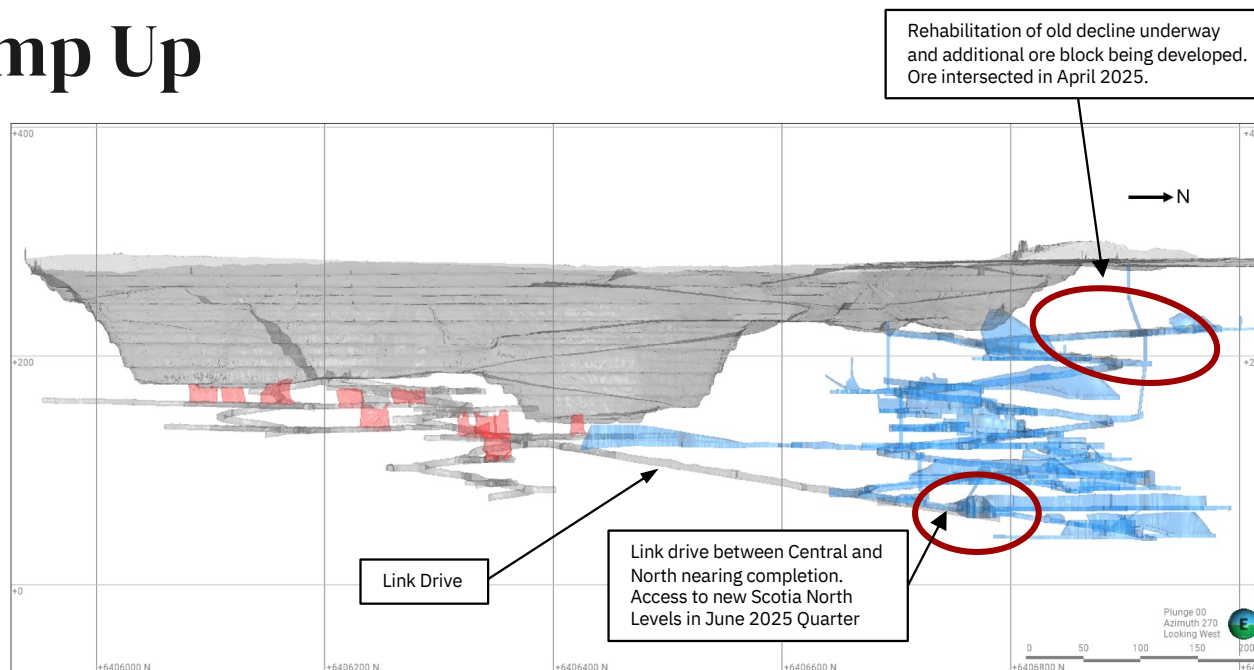
- **Strong extensional drilling results** returned during the quarter indicating that the **ore bodies remain open in all directions.**
- OK is in **steady state** and is expected to continue producing at **approximately 40,000 ounces per annum.**

Scotia, Grade Control Revealing the TRUE Potential



- **Underground mining commenced May 2024.**
- **Production underway and now at full rate.**
- **Wide high-grade zones** in grade control drilling correlating well with development.
- Expected to produce **circa 60,000 Oz per annum** at current planned mining rates.
- High potential for additional mineralisation to increase production rates – **Scotia is a key growth target for Norseman.**

Scotia Ramp Up

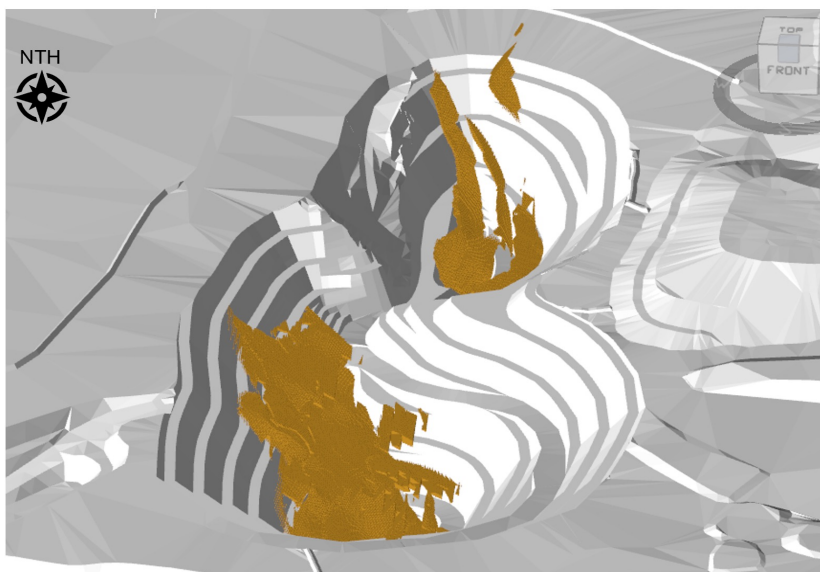


Scotia underground development and stoping areas completed to date

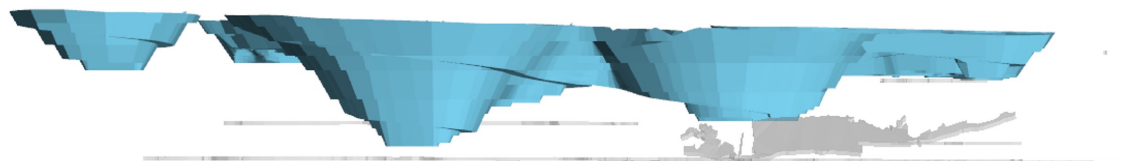
- Central and South areas **now in full production**.
- April production **>40,000 tonnes** compared with March Quarter production of 64,400 tonnes.

- **Production flexibility increasing** with ore development underway in upper North ore blocks.
- Levels accessing lower North ore blocks to be reached from link drive during this quarter.

Princess Royal Mining Area



Isometric View Looking North



Long View Looking West

UG workings connect to
North Royal UG to the North ->

- Open pit operations re-commenced on 6 March 2025 at Princess Royal.
- Well known and respected contractor Big Yellow awarded full service mining contract. **Mining progressing at budgeted rates.**
- Gladstone open pit to commence following completion of Princess Royal early in 2026.
- Open pits expected to deliver **20,000 ounces @ 2.1 g/t during calendar year 2025.**
- Future growth target – provides ideal access point for future underground works around North Royal and Princess Royal. **North Royal mine produced approximately 1.8 million ounces of gold @ 17g/t and has only been mined to a depth of 350 metres.**

Rate, Recovery and Reliability



Norseman processing plant comfortably operating at 1.2Mt per annum

- Comfortably running at 1.2MTPA with further increases up to 1.4MTPA easily achieved WITHOUT any major upgrade costs.
- Excellent recovery: 94.5% FY to date.
- Targeting growth through addition of high-grade underground ounces.

1.2 MTPA Process Rate			
Grade	Ounces Processed	Recovery	Ounces Produced
2.5	96,452	94.5%	91,147
3	115,743	94.5%	109,377
3.5	135,033	94.5%	127,606
4	154,324	94.5%	145,836
4.5	173,614	94.5%	164,065
5	192,904	94.5%	182,295
6.7	258,492	94.5%	244,275
8	308,647	94.5%	291,672

← FY25 approx. guidance

1.4 MTPA Process Rate			
Grade	Ounces Processed	Recovery	Ounces Produced
2.5	112,528	94.5%	106,339
3	135,033	94.5%	127,606
3.5	157,539	94.5%	148,874
4	180,044	94.5%	170,142
4.5	202,550	94.5%	191,409
5	225,055	94.5%	212,677
6.7	301,574	94.5%	284,987
8	360,088	94.5%	340,283

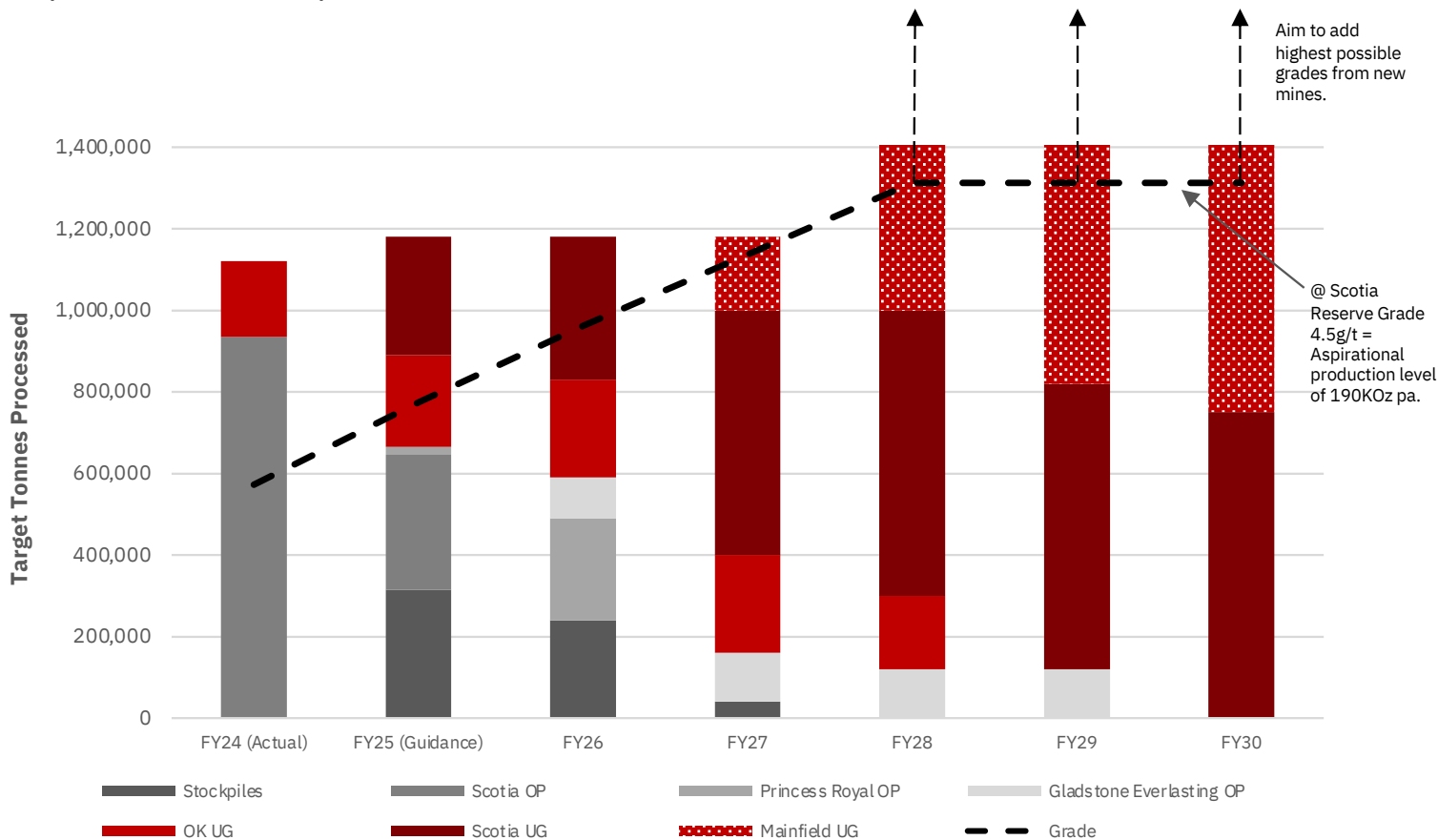
← FY25 expected grade

← Scotia Ore Reserve

← OK YTD Grade

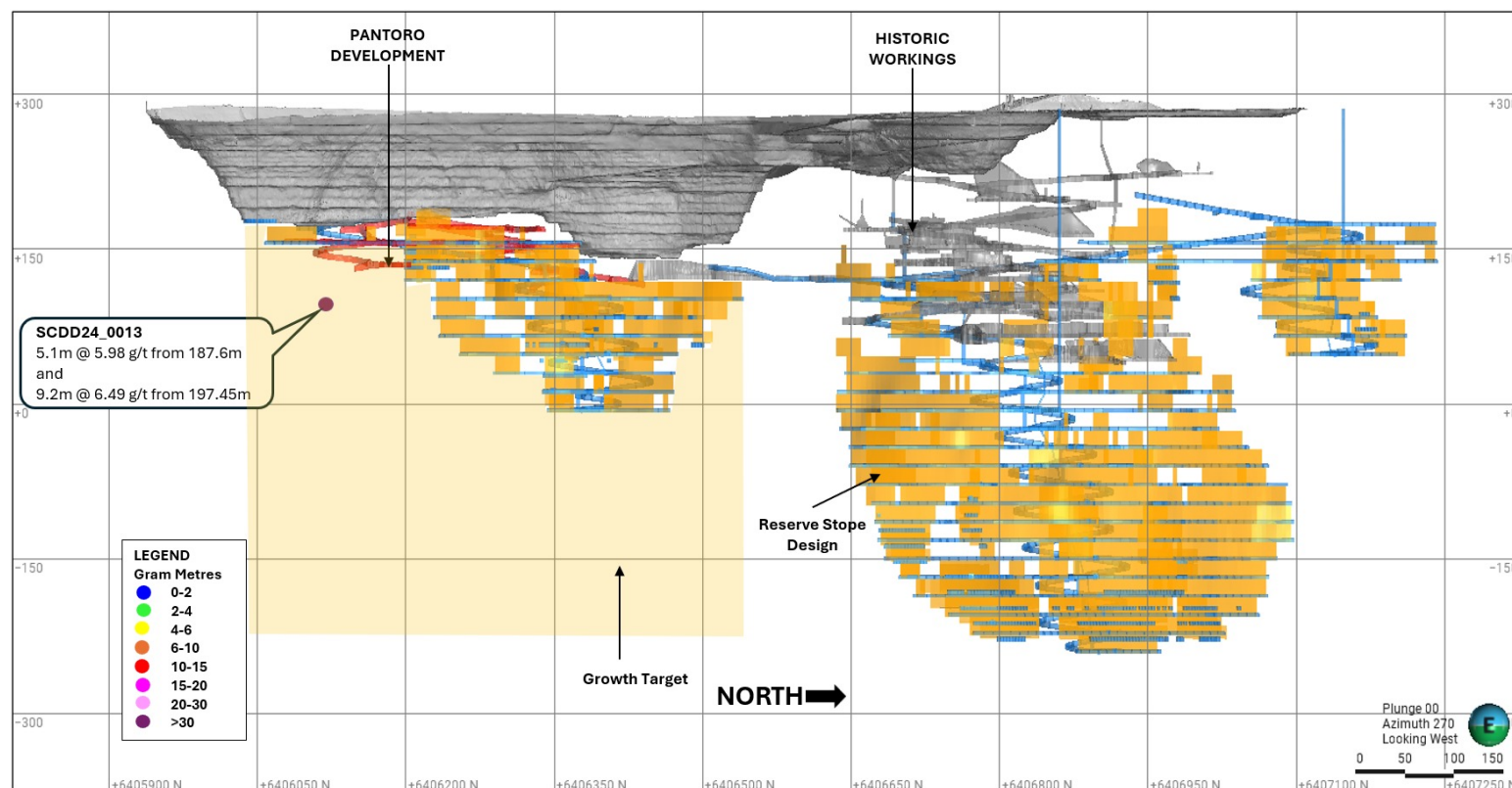
Norseman Growth Pathway

Pantoro's growth strategy aims to add high grade mill feed to expand to +200Kozpa in medium term.



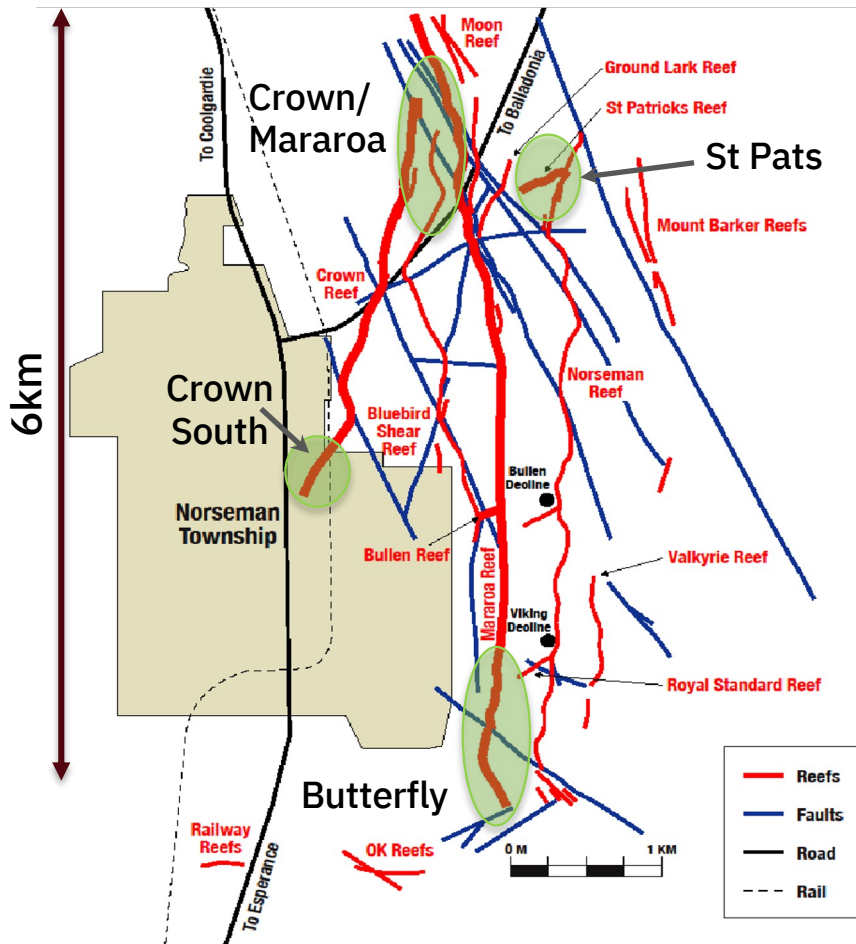
- Replacing open pit feed with **higher grade underground ore.**
- **Growth drilling underway** on surface at Mainfield and underground at Scotia.
- Bullen decline rehabilitation **well progressed** to access Mainfield.
- Underground diamond drilling **commenced** at Bullen in March 2025.

Scotia, Open in ALL Directions



- Underground drilling **commenced in September 2024** primarily focussed on grade control.
- Initially **targeting depth extensions** in the Southern Zone. Good validation from limited expansion drilling to date.
- Extensional **drilling operations to accelerate** throughout the coming year.

Mainfield – the BIG Prize



Mainfield is the most prolific mining area at Norseman to date

- First pass drilling completed with focus areas identified.
- Drill areas focused on zones easily accessed from existing infrastructure.
- Large areas unmined previously.

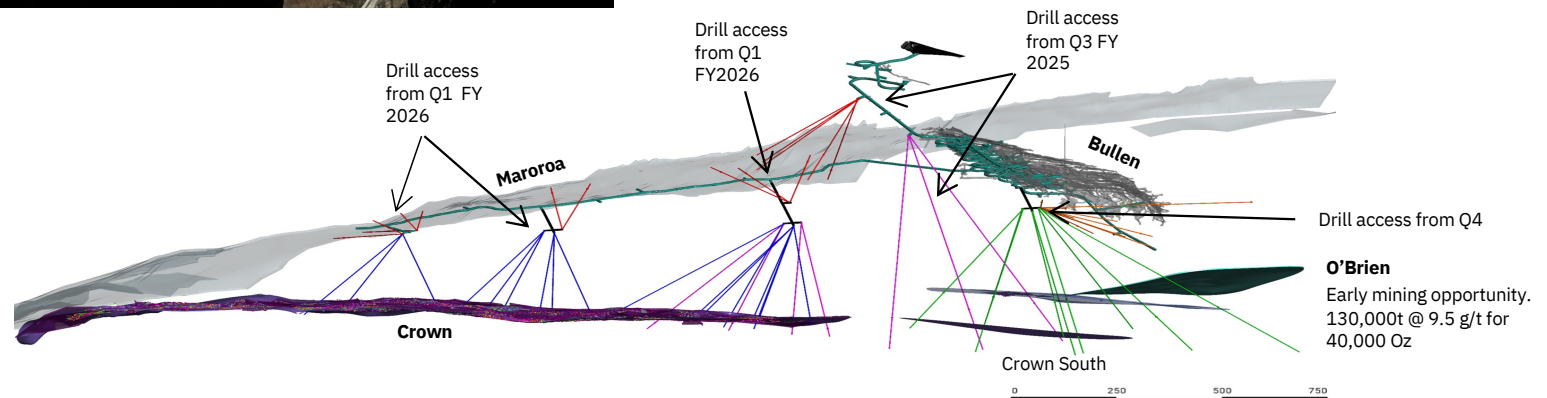
• Very **high-grade mineralisation** encountered in Pantoro drilling:

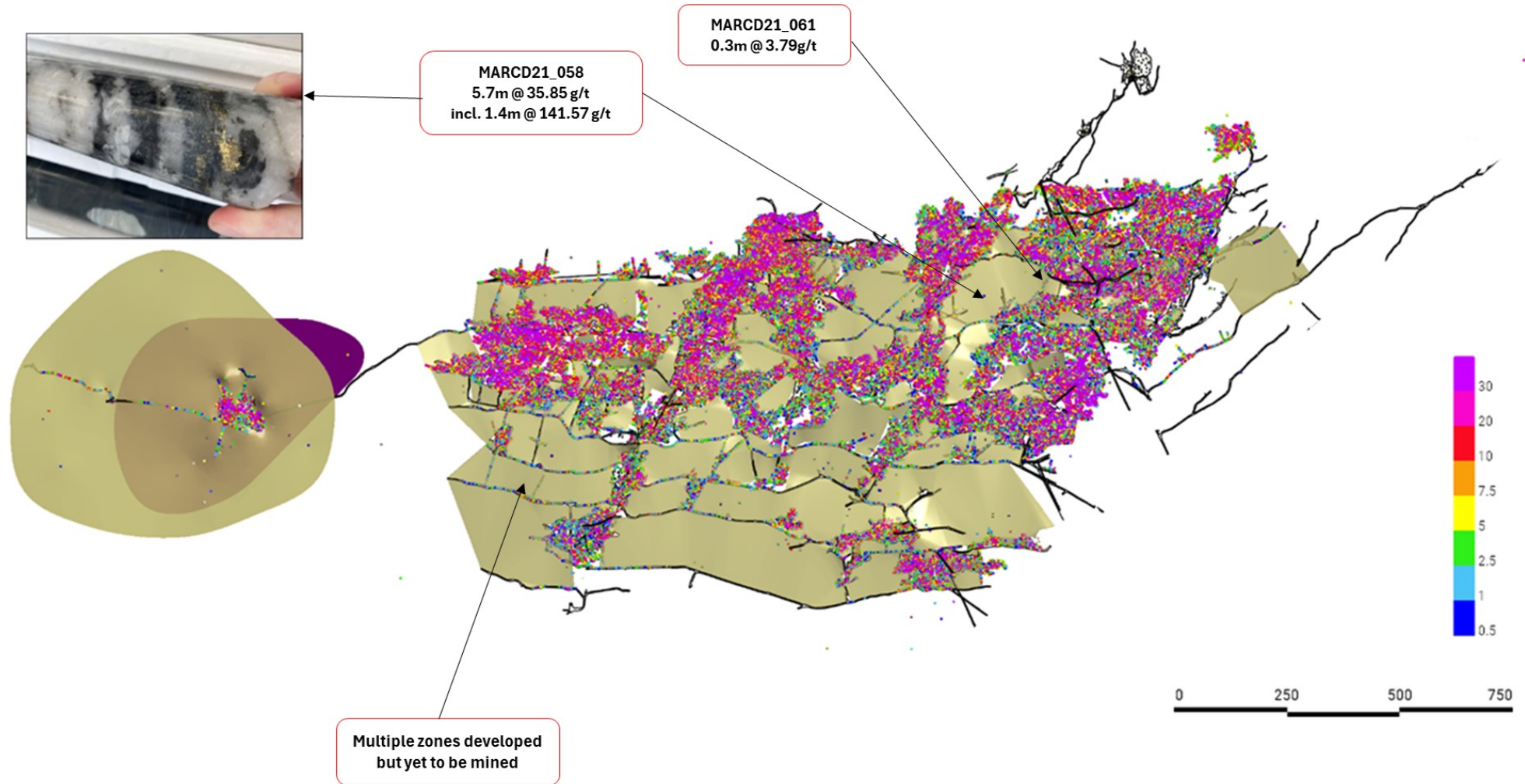
5.7 m @ 35.85 g/t Au inc. 1.4 m @ 141.57 g/t Au.	
4 m @ 6.86 g/t Au.	
1 m @ 23.5 g/t Au.	2 m @ 6.21 g/t Au.
0.45 m @ 21.9 g/t Au.	2 m @ 5.8 g/t Au.
2 m @ 20.61 g/t Au.	4 m @ 5.68 g/t Au.
2 m @ 15.87 g/t Au.	3 m @ 5.35 g/t Au.
6 m @ 14.94 g/t Au.	4 m @ 4.33 g/t Au.
1 m @ 10.3 g/t Au.	5 m @ 3.99 g/t Au.
2 m @ 10.8 g/t Au.	4 m @ 3.53 g/t Au.
1.15 m @ 8.47 g/t Au.	3 m @ 3.24 g/t Au.
3 m @ 7.72 g/t Au.	5 m @ 3.20 g/t Au.

Bullen Rehabilitation and Drilling



- Contract awarded to RedPath Australia.
- Rehabilitation works are **progressing well with excellent ground conditions noted**. Approx 900m advance being achieved per month.
- Drilling commenced in March 2025.





Crown Reef – historical production 1.1 Moz @ 11.2g/t

Southern Mainfield – multiple HIGH-GRADE lodes



Maroroa Reef

Major historical producer with >1MOz mined to date. Results from Pantoro drilling include:

- 3m @ 485.43g/t Au inc. 1m @1420 g/t Au.
- 3m @ 26.63 g/t Au inc. 1m @ 68.4 g/t
- 5m @ 8.61 g/t Au.
- 2 m @ 20.61 g/t Au.
- 2 m @ 10.8 g/t Au.
- 1.15 m @ 8.47 g/t Au.
- 0.45 m @ 21.9 g/t Au.
- 4 m @ 5.68 g/t Au.
- 5 m @ 3.99 g/t Au.
- 0.4 m @ 14.0 g/t Au.

Royal Standard Reef

Historical small scale ,high-grade mine. Results from Pantoro drilling include:

- 1m @ 12.6 g/t Au.
- 1.7 @ 18.66 g/t Au.
- 0.4m @ 37.4 g/t Au.
- 0.3 m @ 20.8 g/t Au from 262.8 m.
- 5 m @ 9.82 g/t Au from 203 m, including 1 m @ 35.8 g/t Au from 204 m.
- 1 m @ 22.7 g/t Au from 108 m.
- 1.63m @ 11.4 g/t Au from 297.6m
- 2.0m @ 11.69 g/t Au from 284m
- 0.63m @ 16.2 g/t Au from 183.82 m

NW - Structures

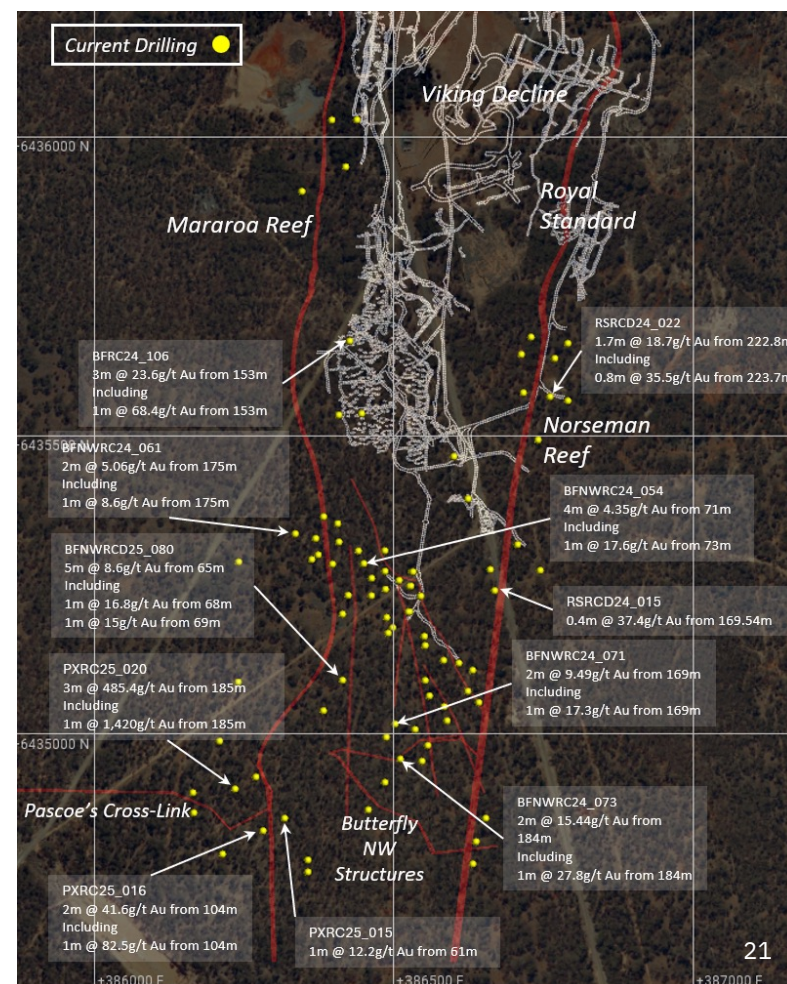
New discovery by Pantoro. Results include:

- 2m @ 9.49 g/t Au
- 2m @ 5.06 g/t Au.
- 2m @15.44 g/t Au.
- 2 m @ 13.25 g/t Au.
- 3 m @ 11.05 g/t Au.
- 6m @ 31.0 g/t Au including 2m @ 81.50 g/t Au.
- 2m @ 20.66 g/t Au from 125m.
- 0.64m @91.62 g/t Au.
- 5.0 m @ 5.67 g/t Au.
- 2.0 m @ 6.96 g/t Au.
- 1.0 m @ 58.60 g/t Au.
- 2.0m @ 12.43 g/t Au.

Pascoe's Cross Link

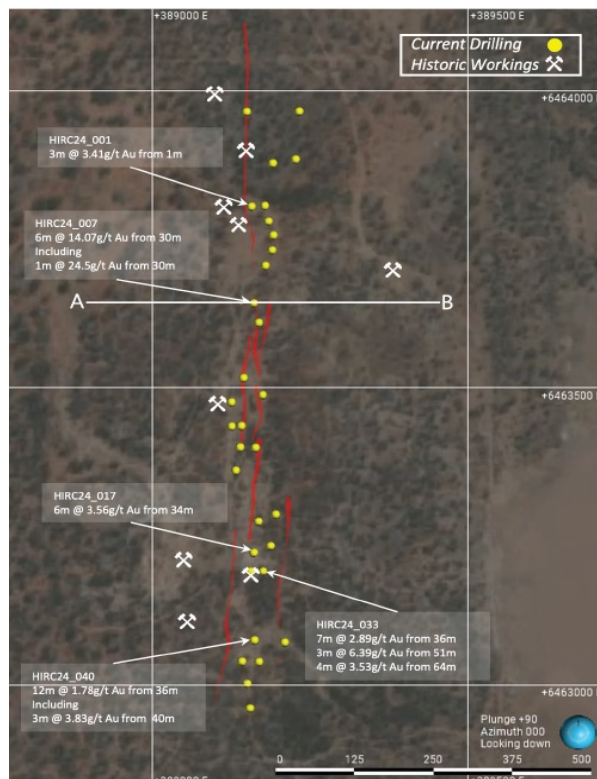
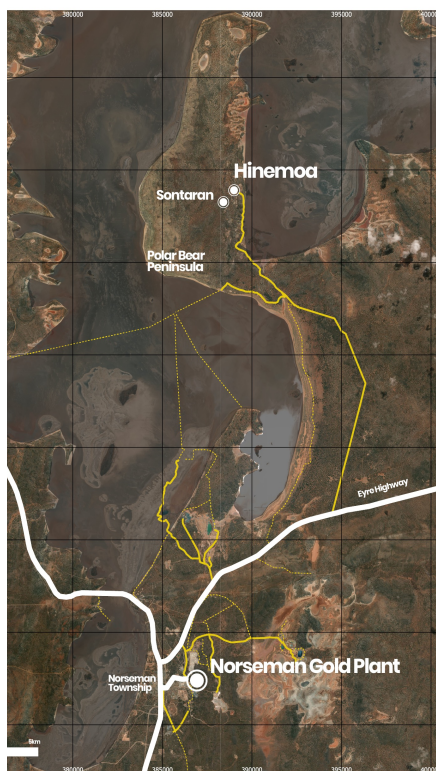
Potential cross linking structure analogous to Bullen. Results from Pantoro drilling include:

- 2m @ 41.6 g/t Au inc. 1m @ 82.5 g/t Au
- 1m @ 12.2 g/t Au



Refer to ASX release on 17 February 2025 for details.

Polar Bear



- Hinemoa and the wider Polar Bear Peninsula has had **limited modern day exploration**.
- Pantoro Gold acquired a small Mining Lease from prospectors during 2022. This lease hosts an old shaft and now allows access to the entire strike length for the first time.
- Considered **prospective for deeper, high-grade mineralisation**.
- Results from initial RC drill program include:
 - 6m @ 14.07/t Au from 30m inc. 1m @24.5 g/t Au from 30m
 - 6m @ 3.56 g/t Au from 34m
 - 3m @ 6.39 g/t Au from 51m
 - 3m @ 3.41 g/t Au from 1m
 - 4m @ 3.53 g/t Au from 64m
 - 12m @ 1.78 g/t Au from 36m inc. 3m @ 3.83 g/t Au from 40m
 - 7m @ 2.89g/t Au from 36m

Summary



Exceptional position, strong cashflow

- Cash growth while **building new mines and advancing growth** activities.
- FY25 to date (3 quarters) **EBITDA A\$117.5 million (US\$75.28)**.
- **A\$132.4 million (US\$84.83) in cash and gold** and building.

Leveraged to the gold price

- Debt free.
- Only 1,000 ounces per month capped at A\$4,200 (US\$2,700) per ounce for all of 2025 and no hedging beyond 2025.

Positioned for growth

- Growth activities progressing to plan with **Bullen Decline rehabilitation advancing rapidly** and additional drill rigs mobilised to site.
- Few, if any, Western Australian long-term production centres with known **existing high-grade resources and a major paucity of drilling**.

Media Enquiries: Sam Macpherson
Vector Advisors
smacpherson@vectoradvisors.au
+61 401 392 925

Investor Enquiries: Paul Cmrlec
Managing Director
admin@pantoro.com.au
+61 8 6263 1000

Mineral Resource & Ore Reserve



Pantoro Global Mineral Resource

	Measured			Indicated			Inferred			Total		
	kT	Grade	kOz	kT	Grade	kOz	kT	Grade	kOz	kT	Grade	kOz
Norseman Gold Project	4,590	1.7	252	21,064	3.2	2,154	19,291	3.7	2,302	44,926	3.3	4,708
Total	4,590	1.7	252	21,064	3.2	2,154	19,291	3.7	2,302	44,926	3.3	4,708

Pantoro Global Ore Reserve

	Proven			Probable			Total		
	kT	Grade	kOz	kT	Grade	kOz	kT	Grade	kOz
Norseman Gold Project	4,212	0.9	117	9,184	2.6	778	13,397	2.1	895
Total	4,212	0.9	117	9,184	2.6	778	13,397	2.1	895

- Refer to ASX Announcement dated 26 September 2024 for full details of the Mineral Resource and Ore Reserve.
- Scotia and Green Lantern Open Pits (0.5 g/t cut-off applied), OK and Scotia Underground Mines (2.0 g/t cut-off applied).
- Norseman Underground (2.5 g/t cut-off grade applied to stoping, 1.0 g/t cut-off grade applied to development necessarily mined to access stope block). Open Pits (0.6 g/t cut-off grade applied).
- Measured and Indicated Mineral Resources are inclusive of those Mineral Resources modified to produce the Ore Reserves.
- Mineral Resource and Ore Reserve statements have been rounded for reporting.
- Rounding may result in apparent summation differences between tonnes, grade and contained metal content.